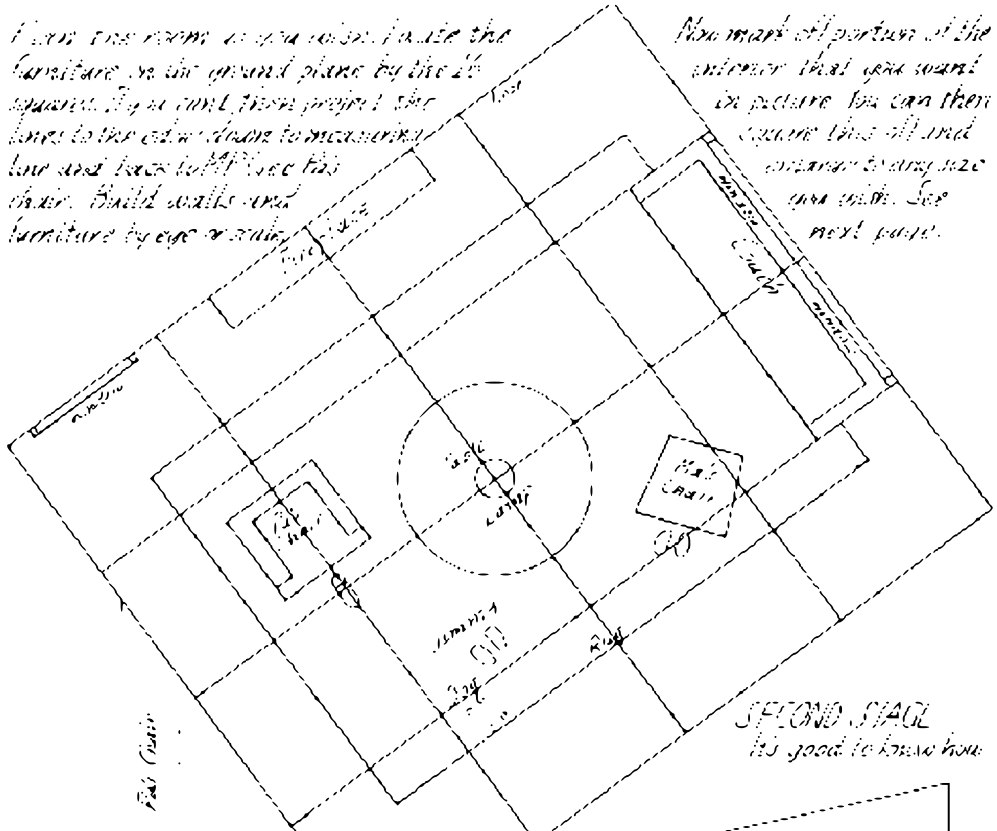


BUILDING AN INTERIOR FROM A GROUND PLAN-II

Draw one room at a time inside the furniture on the ground plane by the 20 square. Then you can then project the lines to the ceiling down to measuring line and back to the floor this way. Build walls and furniture by eye or scale.

Now mark off portions of the exterior that you want in picture you can then measure this off and transfer to any size you wish. See next page.



SECOND STAGE
It's good to know how

